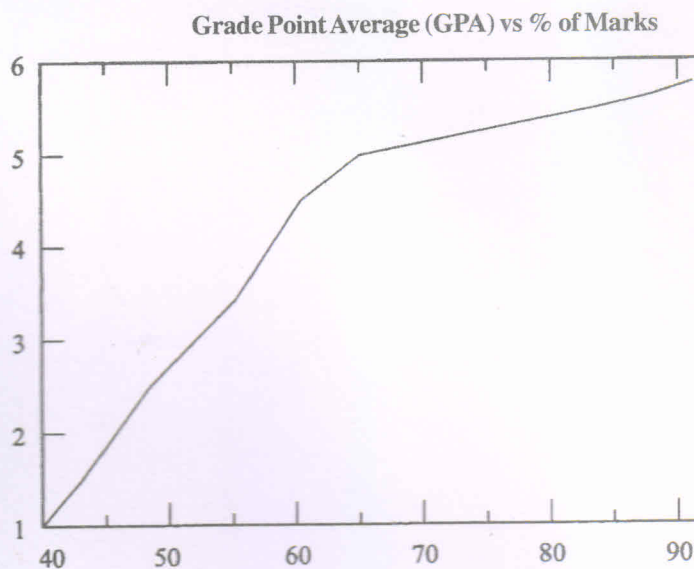


Students admitted for B.Ed. (Gen.) with effect from
Academic Year 2014-2015

Explanation of Grade &
Grade Point Average

Grade	Marks Obtained
O	70-100
A	60-69
B+	55-59
B	50-54



Grade Points	Final Grade	Internal Marks Grade Points		
		Marks Obtained	Grade	Grade Points
06	O : First Class with Distinction	75-100	O	06
05	A : First Class	65-74	A	05
04	B+: Second Class with B+	55-64	B+	04
03	B : Second Class	50-54	B	03
		40-49	C	02
		30-39	D	01
		00-30	E	00

Common Formula for GPA

$$\text{GPA (Grade Point Average)} = \frac{\text{Total of (Grade Points earned x Credit Hours for each course)}}{\text{Total Credits Hours}}$$

ABBREVIATIONS

INT = Internal Examination
 UEX = University Examination
 PC = Performance Cancelled
 AB = Absent
 F = Fail in Subject / Course
 TEX = Term End
 EE = External
 TH = Theory Paper
 TW = Term Work

OR = Oral
 PJ = Project
 VV = Viva
 SL = Sessional
 TO = Total
 PR = Practical
 OL = Online Exam
 OBT = Obtained Marks

GRD = Grade
 CRD = Credit
 GP = Grade Point
 # = Ordinance 4
 & = Ordinance 163
 \$ = Ordinance 1
 @ = Ordinance 1 + 163
 * = Current appearance